

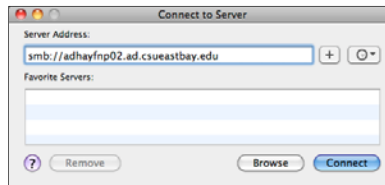
Campus Secure File Storage for Mac OS X

OVERVIEW

On Macs, mapping to network drives may drop after restarting the computer. Therefore, these instructions first instruct you on how to map the drive and second how to have the network drive appear at start up.

STEP A – MAPPING THE NETWORK DRIVE

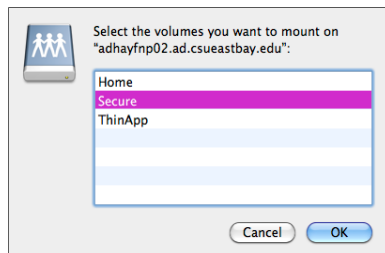
1. Select **Go**
2. Select **Connect to Server**
3. Enter Server Address: **smb://adhayfnp02.ad.csueastbay.edu**
4. Select **Connect**



5. Leave Default: Connect as **Registered User**
6. Enter Name: **NETID** (You may have to remove your user name)
7. Enter Password: **NETID Password**
8. Select **Remember this password in my keychain**
9. Select **Connect**

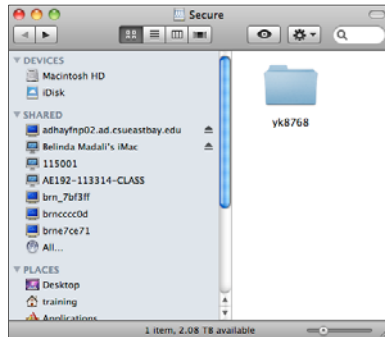


10. For the type of volume you want to mount, select **Secure**
11. Select **OK**



Campus Secure File Storage for Mac OS X

12. A Secure window will appear with a folder named with your NetID. This is the folder where all Level-1 documents should be stored.



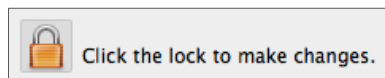
STEP B ADDING THE SECURE NETWORK DRIVE TO START-UP

These instructions will connect the network drive each time you login to your Mac.

1. Go to the **Apple icon**
2. Select **System Preferences**
3. Go to **System**> Select **Accounts**
4. Under **My Account** on the left, select your user account.



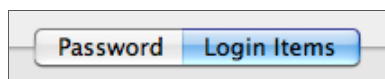
5. Click the lock icon to make changes. It may prompt for your password.



After clicking the lock, the lock will appear unlocked.

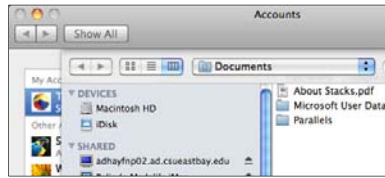


6. Select the **Login Items** tab.

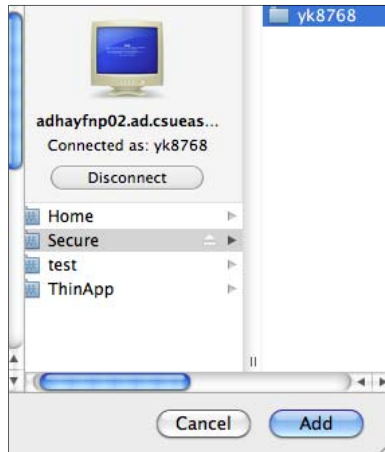


Campus Secure File Storage for Mac OS X

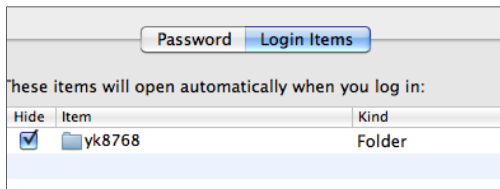
- Click on the + sign to add the network drive as a hidden application.
- In the left side of the Accounts window, locate and select **adhayfnp02.csueastbay.edu**



- Select **Secure**
- Select **NETID Folder**
- Select **Add**



- Check the **Hide** box.



- Click the **lock icon** to prevent further changes.
- Close the Window.
- The Secure drive can now be found as one of your Shared Drives.