

California State University, East Bay Academic Access, Enhancement and Excellence (A2E2) Fee



EXECUTIVE ORDER 1066



Academic Access, Enhancement and Excellence (A2E2) Fee Basics



- Three Components
- Component I: Enhancing Student Learning and Success
 - Begins: 2011-2012
- Component II: Electronic-text and Rental Services
 - Begins: TBD
- Component III: Electronic Devices
 - Begins: TBD

Academic Access, Enhancement and Excellence (A2E2) Fee Basics



- **Purpose of Fee**
 - Facilitate student retention, success, and workforce development through;
 - Improved use of technology
 - Enhanced classroom resources
 - Innovative use of high impact programs focused on approaches to increase retention and success of underrepresented students
 - Enhanced teaching, learning and support systems
 - Student access to electronic platform-based educational learning materials.

Academic Access, Enhancement and Excellence (A2E2) Fee Basics



- Replaces all existing Category III miscellaneous course fees except those exceeding \$50 as of spring quarter 2011.
- Replaces the IRA fee, except the portion of the IRA fee dedicated to Division II athletics as of spring quarter 2011.
- Provides for clickers for all incoming freshman beginning Fall 2012.

Academic Access, Enhancement and Excellence (A2E2) Fee Basics



- Implementation of A2E2 fee is expected to follow the schedule presented EO 1066; however;
 - EO 1066 states “the campus shall review the established goals associated with each quarterly academic year fee increase and make adjustments to the fee schedule if established goals for Component I (student academic activities and services) and Component II (electronic-text and rental services) cannot be achieved. The campus is authorized to modify this implementation schedule to address the actual cost of electronic devices identified as a planned requirement (Component III) for this student support initiative.”
 - Review and recommendations to modify fee schedule
 - A2E2 Advisory Committee
 - Equal Number of Faculty and Students

Academic Access, Enhancement and Excellence (A2E2) Fee Basics



	Component I Enhancing Student Learning and Success	Component II Electronic-text and Rental Services	Component III Electronic Devices
Component Fee Per Quarter 2011-12	\$40	\$0	\$0
Component Fee Per Quarter 2012- Minimum	\$40	\$0	TBD
Component Fee Per Quarter Maximum	\$120	\$177	TBD
Function of A2E2 Committee	Recommends Fee increases	Recommends implementation and Fee Levels	Recommends implementation and Fee Levels

The CSUEB A2E2 Fee: Component I: Enhancing Student Learning and Success

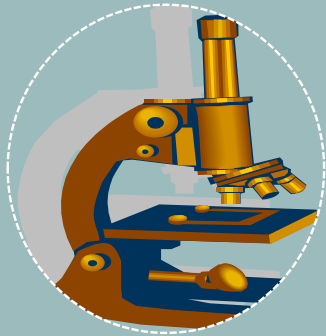


\$40 per student fee starting Winter 2012



Instructional Activities

- **Examples of Instructional Activities:**
 - Pioneer Newspaper
 - Music, Theatre and Dance productions and performances
 - Freshman Year Experience
 - Arroyo Literary Review
 - Political Science and Sociology Internships
 - Model United Nations
 - University Art Gallery
 - Environmental Sciences and Geology field trips
- **Prior to A2E2**
 - Instructionally Related Activities (IRA) fees
 - \$8/student/quarter
 - Funding recommended by students and faculty on IRA Advisory Board
- **With A2E2**
 - Enhanced Instructionally Related Activities (EIRA) (expansion of IRA)
 - Funding from A2E2 fees to be recommended by students and faculty on A2E2 Advisory Committee



Instructional and Research Equipment

- **Examples of Instructional and Research Equipment:**
 - Laptops for student use (Library)
 - Thompson Financial Databases (Business)
 - Biofeedback equipment (Kinesiology)
 - TV Studio Lighting (Communication)
 - Grand Piano (Music)
 - UV-VIS Spectrophotometers (Biology)
 - Seismograph (Geology)
- **Prior to A2E2**
 - Little or no funding (ad hoc) prior to 2010
 - One time funding in 2010-11
 - Equipment needs identified by faculty/administration
- **With A2E2**
 - Instructional and Research Equipment Enhancement Program to start
 - Equipment needs identified by college/library students and faculty
 - Funding from A2E2 fees to be determined by Academic Affairs



Course Materials

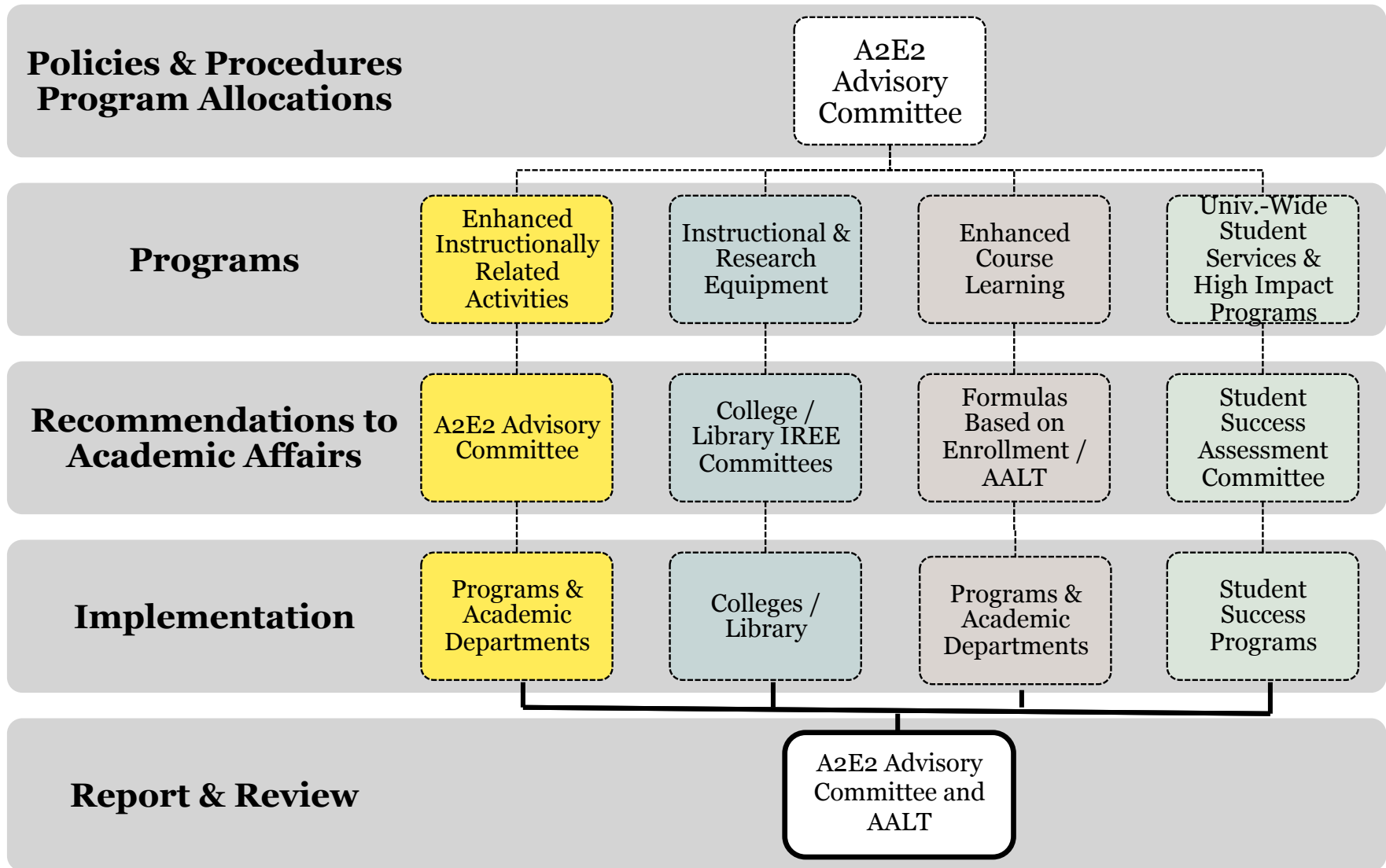
- **Examples of courses/
materials:**
 - Art materials (ceramics, printmaking, sculpture, photography)
 - English assessments (writing skills)
 - Kinesiology materials (biomechanics, exercise physiology, golf)
 - Multimedia activities
 - Nursing materials & supplies
 - Recreation activities (outdoor adventure and living)
- **Prior to A2E2**
 - Few courses charged miscellaneous course fees
 - Instructional activities and enhancements limited by lack of funding
- **With A2E2**
 - Expansion of activities via Enhanced Course Learning (ECL) program
 - No misc. course fees (unless more than \$50)
 - Funding from A2E2 fees to be determined by Academic Affairs via enrollment formulas



University- wide Student Services and High Impact Programs

- Examples of student services and high impact programs:
 - Tutoring
 - Advising and career education
 - Service learning
 - Library services
 - Peer mentoring
 - Internships
- Prior to A2E2
 - Little to no funding for programs to enhance student retention and success
- With A2E2
 - Specific, focused interventions and programs especially for underrepresented students
 - Funding policies and levels from A2E2 fees to be recommended by students and faculty on A2E2 Advisory Committee

FLOWCHART OF A2E2 FEE IMPLEMENTATION



FLOWCHART OF A2E2 FEE IMPLEMENTATION

2011-12

