

ASSURANCE OF LEARNING

Assessment Report

Program: BSBA

Term: Fall 2018 (BUS 340 On-ground + Online)

Spring 2019 (Acct 340 On-ground)

LEARNING OBJECTIVE	2B: Students who graduate will apply technology to analyze data and provide solutions to business problems.
MAPPED COURSE	BUS 340: Information Technology Management Acct 340: Accounting Information Systems
CURRICULUM ALIGNMENT	Courses mapped as introducing LO2B: BUS 201, 230, 330, 350, 360, 499 Courses mapped as developing LO2B: BUS 202, 380, 340 Courses mapped as mastering LO2B: BUS 340/ACCT 340
# OF PARTICIPATING FACULTY	5
METHODS & PROCEDURES	Faculty completed norming process to establish standard setting across course sections using a sample assignment. Faculty identified an assignment within their individual section to assess. A sample from each faculty was collected. Sample artifacts were archived. A sample of students from two sections of Acct 340 were added to the sample of students from each section of BUS 340.
ASSESSMENT TOOL	CBE Developed Rubric (<i>see end of report for rubric</i>)
PERFORMANCE TARGETS	70% of students will meet expectations. Less than 10% of students will score "1" (below) on any "trait" in the rubric.

Data Analysis Summary

There are two targets set for this learning objective, (1) 70% of students will meet or exceed expectations, and (2) less than 10% of students will score "1" (below expectation) on any "trait" in the rubric. Overall, 78% of students met expectations on the learning objective. A total of 95 students were assessed.

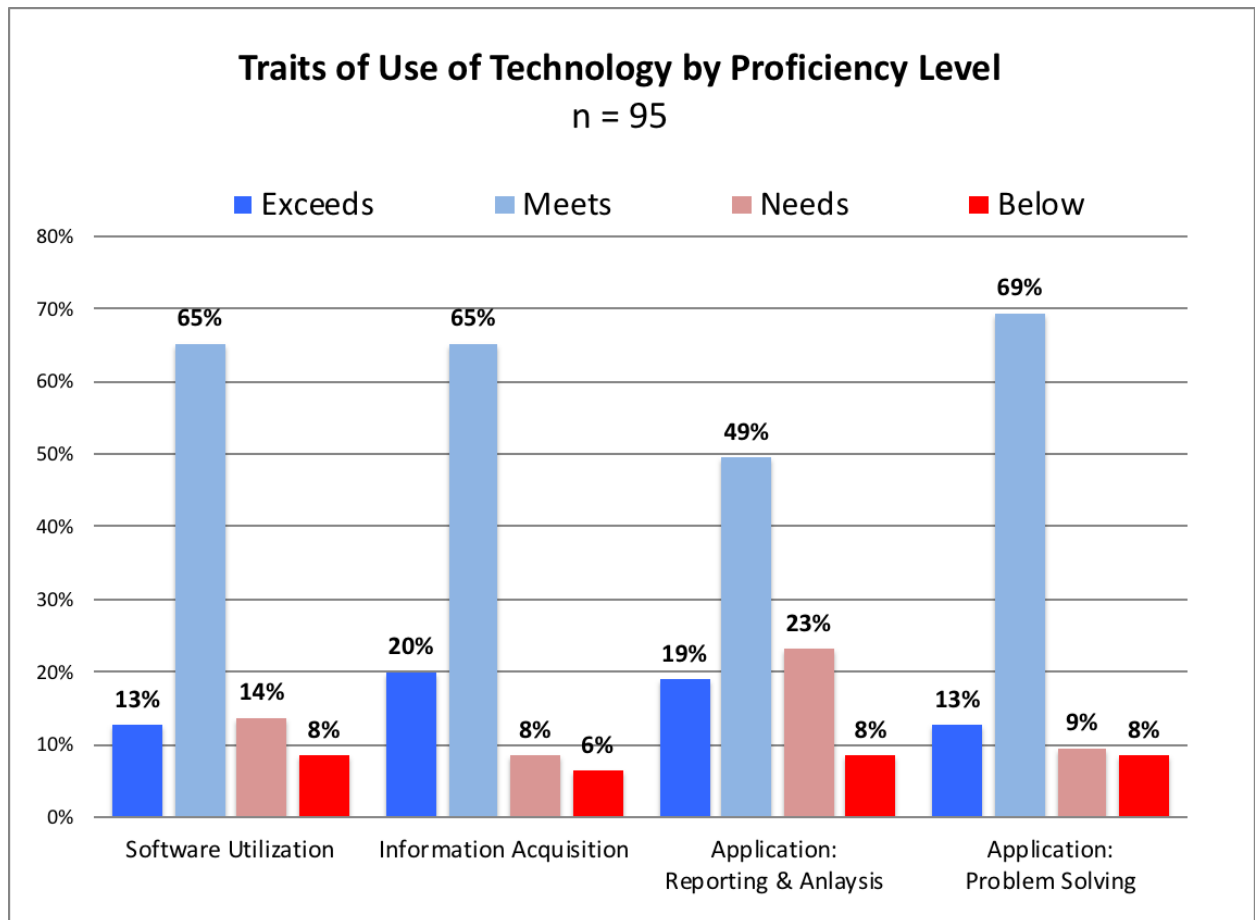
n = 95	Software Utilization	Information Acquisition	Application: Reporting & Analysis	Application: Problem Solving
Meets Expectation	78%	85%	68%	82%
Does Not Meet Expectation	22%	15%	32%	18%
Total	100%	100%	100%	100%
Overall Score	78%			

Assessment Scores by Individual Traits.

Regarding the second performance target that less than 10% of students will score “1” (below expectation) on any “trait” in the rubric, scores show students met this performance target.

Detailed Assessment Scores by Individual Traits

By Individual Traits	Software Utilization	Information Acquisition	Application: Reporting & Anlysis	Application: Problem Solving
Exceeds	13%	20%	19%	13%
Meets	65%	65%	49%	69%
Needs	14%	8%	23%	9%
Below	8%	6%	8%	8%



**Percentages may not add to 100% due to rounding.*

Next Steps

- Share report with faculty
- Share report with administrators

- Program Committee to call for review meeting
- Conduct Closing the Loop meeting
- Complete Closing the Loop Handout
- Share Closing the Loop Handout with Curriculum Committee
- Approval by Curriculum Committee
- Share Closing the Loop Handout with Dean's Office'
- Approval by Dean's Office
- Share Closing the Loop Handout with Faculty
- Publish results and findings
- Publish meeting minutes
- Implement Actions
- Track Actions

Rubric

LO2B: Use of Technology				
Traits	Exceeds Expectation	Meets Expectation	Needs Improvement	Below Expectation
	4 pts	3 pts	2 pts	1 pt
Software Utilization	Makes innovative use of software tools to complete the task.	Utilizes appropriate software tools for the task.	Utilizes software, with some mistakes, to complete the task to a satisfactory level.	Makes poor use of software and does not complete task to a satisfactory level.
Information Acquisition	Utilizes technology to locate reliable, discipline specific information from a variety of sources.	Utilizes technology to locate quality information on a topic from a variety of sources.	Utilizes technology to locate needed information on a topic from a variety of sources	Minimally successful at utilizing technology to locate needed information.
Application: Reporting & Analysis	Sophisticated reporting and analysis undertaken within the software application.	Software used competently to provide required reporting and analysis.	Utilizes software but provides inaccurate reporting or analysis.	Is unable to utilize software to undertake required reporting or analysis.
Application: Problem Solving	Sophisticated and innovative use of technology to support problem solving.	Appropriate use of technology to support problem solving.	Inappropriate selection of technology solution to support problem solving activity.	Makes no use of software applications to support problem solving activity.

End of Report