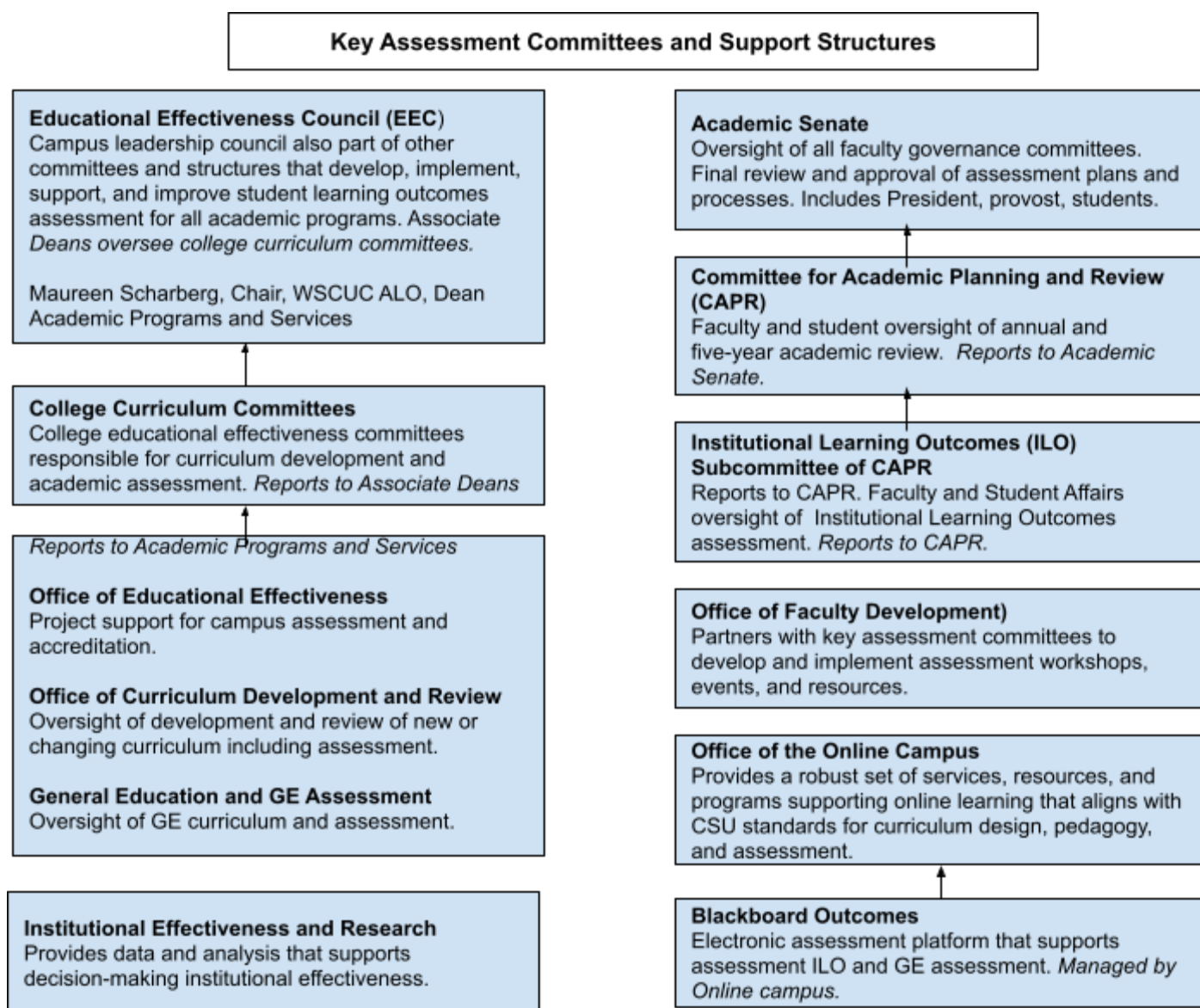


**Groups and Individuals
 Engaged in Academic Assessment Activities**



Key Assessment Leadership at Cal State East Bay

Name	Title	Leadership Role in Assessment	Assessment Committees/ Groups
Maureen Scharberg	Dean, Academic Programs and Services,	WSCUC Assessment Liaison Officer responsible for campus accreditation and curricular and co-curricular assessment	EEC (chair) CAPR member Oversees GE, Educational Effectiveness, and Curriculum Development
Suzanne Espinoza	Vice President, Student Affairs	Student Affairs Assessment	Student Affairs direct reports are ILO subcommittee members
Fanny Yeung	Dir. Instl Research & Analysis	Responsible for providing faculty and staff assessment data	IER (Director) EEC CAPR
Danika LeDuc	Associate Dean	Assessment for College of Science	EEC College Curriculum
Sarah Nielsen	Associate Dean	Assessment for College of Letters, Arts, and Social Science	EEC College Curriculum
Nancy Mangold	Associate Dean	Assessment for College of Business	EEC College Curriculum
Paul Carpenter	Chair	Assessment for College of Education and Allied Studies	EEC College Curriculum
Caron Inouye	Director, General Education	Responsible for GE Assessment	EEC
Arnab Mukerjee	Faculty Chair, CAPR	Responsible for academic annual and five-year reviews	CAPR Academic Senate ILO Subcommittee
Nancy White	Faculty co-chair ILO Subcommittee	GE Assessment	EEC ILO Subcommittee (co-chair)
Jessica Weiss	Director, Office of Faculty Development	Responsible for faculty Professional Development including curriculum design and assessment	EEC Office of Faculty Development
Roger Wen	Senior Director, Online Campus	Responsible for team that supports faculty teaching and assessment using Blackboard Learn, course management software.	Office of Online Campus Blackboard Outcomes