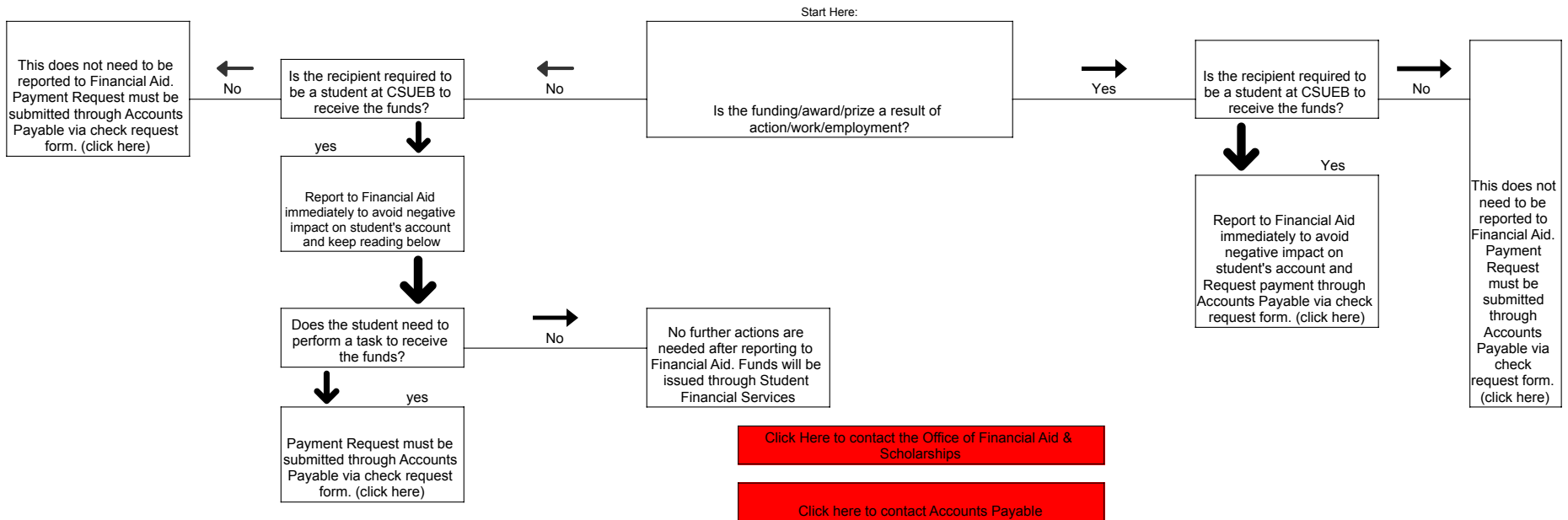


Payments to Students Decision Tree



Administrators who report funding through the Office of Financial Aid & Scholarships must disclose the following to every student recipient:

Federal Regulations do not allow CSU East Bay to provide financial aid recipients with funding in excess of their Cost of Attendance or 'Need' as calculated by the FAFSA/CADAA Application. (Need = COA - EFC). If you receive this funding and its addition results in an excess, the funds may replace your current Financial Aid package in an order that will be in your best interest. For example, your loans or a need based aid that you may be able to use in subsequent terms may be replaced.

If your total Financial Aid package was in excess of your Cost of Attendance or 'Need' as calculated by the FAFSA/CADAA application with the addition of these funds, the Office of Financial Aid & Scholarships is obligated to adjust your financial aid accordingly. If your aid was subject to an adjustment, you will be contacted via your horizon email account. Note that adjustments to aid may result in an outstanding balance that will be your responsibility to settle. As such, before spending the funds it is advisable to contact the Office of Financial Aid & Scholarships to ask whether your aid will need to be adjusted.