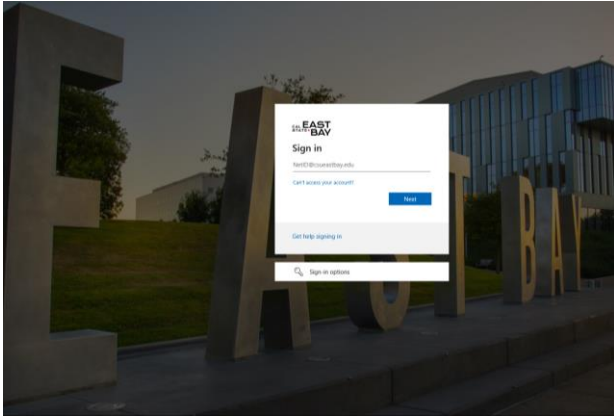
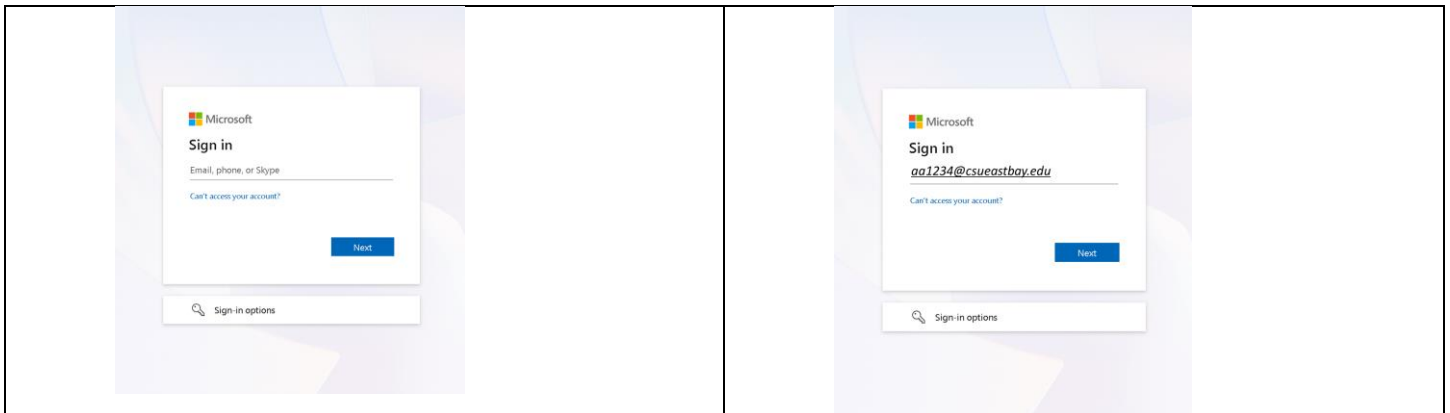


Starting June 5, this will become the new M365 logon experience for employees.

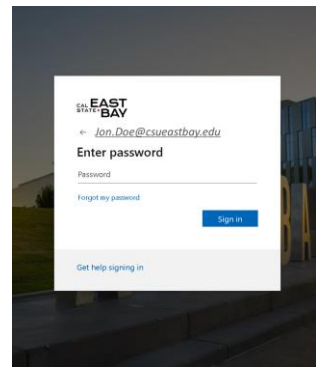
1. This will be the new look of the [Login page](https://login.microsoftonline.com/?whr=csueastbay.edu)
(<https://login.microsoftonline.com/?whr=csueastbay.edu>)



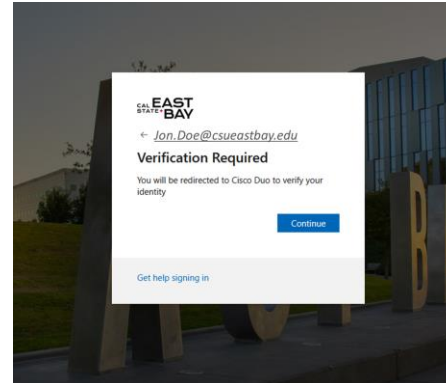
2. To log in, enter NetID@csueastbay.edu and click Next.

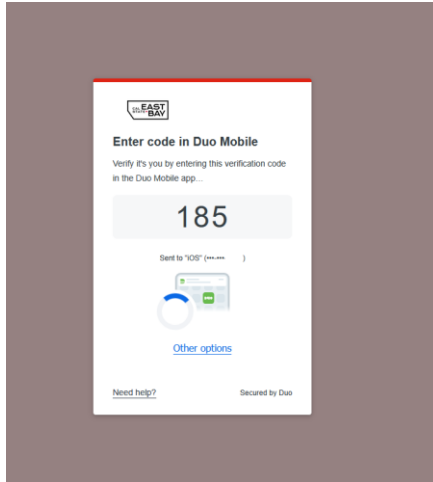
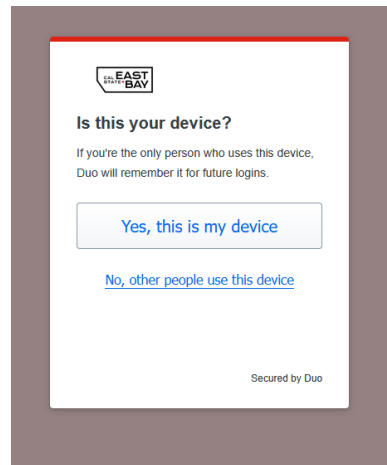


3. Enter your password and click on 'Sign in'



4. Continue with Duo verification



5. Enter code in Duo Mobile**6. Confirm Device**

This completes the logon process for M365 with EntraID.